



FACTS ABOUT RAPPGO WOOD FLOORING

MULTI-PLY FLOORS – PROFILES – CARE AND MAINTENANCE – SURFACE TREATMENTS –
INSTALLATION METHODS – RANGE

FLOORS FOR LIFE

Once you have chosen your Rappgo board, you have a floor for life – a floor with character and of the finest class.

Rappgo's multi-ply floors guarantee shape stability and a minimum of gaps year after year – something a solid wood floor can never offer. While solid wood floors twist and turn, multi-ply floors remain firmly in place.



The secret behind the shape stability is the way the boards are made. Rappgo's wide boards are made of three layers bonded at 90 degrees to one another. This minimises the natural movement of the individual layers, thus eliminating the problem of gaps between the boards.



Solid boards have a tendency to warp.

Solid boards have a tendency to warp. This results in gaps forming between the boards and an excessive amount of wood has to be sanded off to make the boards flat and even. With multi-ply boards, these problems simply do not exist, which allows polishing a greater number of times.



- *The upper wear layer is always made from core wood, which is where the original grain is at its most vibrant and distinct.*
- *The intermediate layer reduces the natural tendency of the board to expand or shrink.*
- *The purpose of the bottom layer of the board is to neutralise any tension in the wear layer and to make the whole structure more stable.*

RAPPGO'S TWO RANGES

MÖRKASKOG

Mörkaskog is our regular range of flooring and is available in widths of 185 mm (birch) and 205 mm for all types of wood. Thickness is 14 mm with a wear layer of 3.8–4 mm. Mörkaskog with a 300 mm width (oak, ash and pine) has a wear layer of approx. 5 mm.

NORDIC

Nordic is a narrow wood flooring with widths of 140 mm or 185 mm by 13 mm thick, and a wear layer of 2.7–3.1 mm. Nordic Nautic, our ship deck planking, has a width of 135 mm.

THREE TYPES OF BOARDS

BONDED JOINTS – THE CLASSIC FLOOR

The classic floor that is known and loved throughout the world. This reliable type of floor never disappoints – whether you are looking for austere modernity or rustic warmth. Supplied with micro-bevelled longitudinal edges.

RAPPLOC – AS SIMPLE AS IT GETS

With RappLoc – Rappgo's glue-free click-join system – floors are installed board by board, but without the sometimes complicated process of having to join the short ends before the long sides are fitted into place. The result is a soulful floor achieved with a minimum of effort and impossible to distinguish from a bonded joint floor with the naked eye. Supplied with micro-bevelled longitudinal edges.



Rappgo Strip – white ash or teak edging, 14 mm thick and 10 mm wide. Can be laid between boards to create a maritime feel, or used as a frieze. NOTE! Only works in combination with Rappgo Mörkaskog 14 mm range with bonded joints.

NAUTIC – SHIP DECKING WITH A DEEP SEA FEEL

A nautical floor is the obvious choice if you are looking for a maritime ambience. Available with black rubber strip. Ship decking can be sanded; it creates continuity and a pleasant feeling of space and is equally as popular in modern city apartments as it is in houses on the coast.

Sandable rubber strip for ship decking.

PROFILES

Rappgo supplies three types of profiles in oak and white ash: skirting profiles, stair nosing profiles and T-profiles. The profiles are supplied untreated.

Skirting profile – used along walls.

Stair nosing profile – used to finish stair treads. (For use in combination with Mörkaskog 14 mm range of bonded joints).

T-profile – used as a connector strip between two floors.

CARE AND MAINTENANCE

Regardless of the type of floor, common sense goes a long way. By stopping dirt at the front door, you make it much easier to maintain your floors and increase their lives at the same time. Heavy furniture or furniture that is often moved should be fitted with pads or castors to prevent scratches. In offices and other public areas, it may be a good idea to use floor protectors under desks and chairs so as to preserve the distinctive features of the floor.

VARNISHED FLOORS

Varnished floors from Rappgo are protected against most harmful effects. The boards are factory varnished with a formaldehyde-free, UV hardened, matte satin acrylic varnish (gloss value 18–20), that both repels dirt and makes the floor very easy to look after. However, water does not go well with wooden floors. Take care to protect your floor against all kinds of moisture and wipe up any spilled liquids immediately. Normally, it is sufficient to vacuum your floor daily and wipe it over with a well wrung mop every now and again. You can use mild, synthetic cleaning agents – as long as they do not contain ammonia or wax. In rooms where there is a risk of water coming into contact with the floor – kitchens and halls, for example – we recommend having your floor varnished again once it has been installed.

OILED FLOORS

Floors that have been correctly treated with oil are very durable and resistant to dirt. Rappgo's oiled floors are treated with a natural vegetable oil that is absorbed by the wood and provides deep-down protection while highlighting the delightful character of the wood. This technique allows you to carry out minor repairs of – and improvements to – the floor surface.

Once the flooring has been laid an installation treatment is carried out using wood refresher oil. A number of suitable makes are recommended in Rappgo's installation instructions supplied with the package.

LYE-TREATED FLOORS

When floors are treated with lye, the "yellowness" of the wood is toned down and a grey-white shade appears. By itself, lye treatment does not protect the floor against wear, but the lye does open the pores in the wood so that oil or soap can be absorbed more deeply. It is this follow-up treatment that protects the floor and makes it hard-wearing.

Rappgo supplies lye-treated floors in pine and spruce. A lye-treated and grey-oiled oak floor is also available. Many people choose soap for the follow-up treatment of these floors, which adds a warm, living feel. Floors treated with lye and soap are simple to maintain. Generally speaking, it is sufficient to clean them with soap every now and again. Remember to use the right sort of soap, (wood floor oil soap, pH value 8–9). A number of suitable makes of oils and soaps are recommended in Rappgo's installation instructions.

Wood is a living material, so the colours and grains shown in this catalogue may differ somewhat from those of the actual products. Call in at your local dealer to take a first-hand look at our floors. For a list of dealers, visit www.en.rappgo.se.

SURFACE TREATMENTS



Ash, varnished



Ash, natural oil



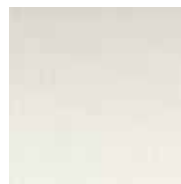
Ash, white oil



Ash, dark oil



Ash, brown stained / varnish



White Ash, white stained / varnish



White Ash, white oil



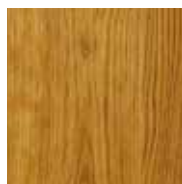
White Ash, Nautic, white oil



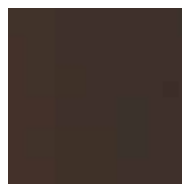
Birch, varnish



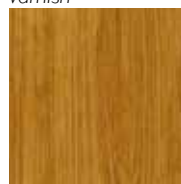
Oak, varnish



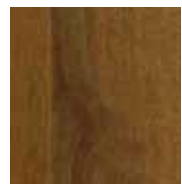
Oak, natural oil



Oak Coffee, brushed / dark oil



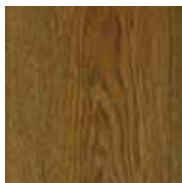
Oak, brushed / natural oil



Oak Rough, brushed / dark oil



Oak, grey lye / grey oil



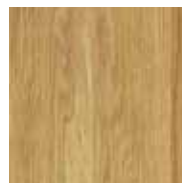
Oak, dark oil



Oak Coffee, dark oil



Oak, white stained / varnish



Oak, white oil



Oak Chateau



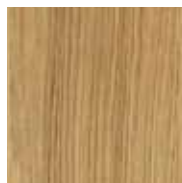
Oak Rough, natural oil



Oak Palais



Oak Nautic, natural oil



Oak, white oil / brushed



Oak, brushed / varnish



Pine, varnish



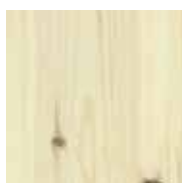
Pine, natural oil



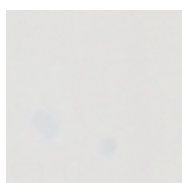
Pine, lye



Pine, brushed / natural oil



Pine, lye / white oil



Pine, white stained / varnish



Spruce, varnish



Spruce, lye / white oil



Larch, varnish



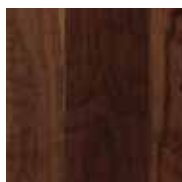
Larch, natural oil



Larch, brushed / natural oil



Larch, white oil



Walnut, varnish



Walnut, natural oil

When you buy a Rappgo floor, you have every opportunity to choose a surface appearance that fully matches your taste and needs. In addition to our seven classic treatments – see above – we also use other methods such as thermo-treatment. Every type of wood is also available untreated. The tables for Mörkaskog and Nordic describe the different types of surface treatment that are available.

UNDERFLOOR HEATING

It is becoming increasingly common to install underfloor heating in a room or an entire apartment. There are, however, some factors to consider before installing a wooden floor on top of a heating system of this kind. Underfloor heating is typically divided into two types: water-borne and electric. If you choose the electric solution, make sure that your underfloor heating supplier guarantees that the system is suitable for wooden floors.

Some types of wood are better suited to underfloor heating than others. For example, beech and maple are not at all suitable for use with underfloor heating systems. These woods have a tendency to expand and contract more than other types of wood, which can damage your floor. Note that such damage is not considered a manufacturing defect and will therefore not be accepted as a valid reason for a claim.

The installation instructions supplied with your Rappgo floor contain more information about underfloor heating. For example, the instructions state that the floor surface temperature must never exceed 27°C and that the relative humidity should be between 30 and 60 per cent. The boards can be permanently damaged if humidity is too high or too low. If you follow the instructions, your Rappgo floor will perform excellently with an underfloor heating system.

ROOM CLIMATE

During the cold months of the year, relative humidity tends to fall, sometimes even below the recommended limit. Heat sources such as wood-fired stoves and open fires accelerate the dehumidification of indoor air and, in the worst cases, can even cause cracks in the wear layer and delamination of the wood floor. Air humidifiers and ordinary pot plants are great aids for counteracting low humidity in the coldest months of the year.



HOW TO INSTALL YOUR RAPPGO FLOOR

FLOATING –

FOR FLOORS 13/14 MM THICK

This is the most common installation method, and involves the floor's being simply installed on a fixed supporting surface. Here, the boards are glued together along tongue and groove joints, with both longitudinal and latitudinal air gaps. Floating floors should not be more than 8 metres wide and 12 metres long. It is possible to lay 12 m x 20 m floor sections without expansion joints when gluing, screwing or laying adhesive-free flooring (RappLoc). We recommend that kitchens not be placed on top of flooring as this may cause excessive loading. Rappgo 13/14 mm floors can also be screwed to an underlying floor. If this method is applied, it is only necessary to glue the short ends

SCREWED –

FOR FLOORS 22 MM THICK

When the underlying surface consists of joists no more than 60 cm apart, the floor should be screwed in place through the board tongues. The boards must be glued together along the short sides, but not along the long sides or onto the joists. With Rappgo floors, the joints do not have to lie on top of the joists, but two adjacent boards must never be joined between the same pair of joists.

GLUE DOWN –

FOR FLOORS 13/14 MM OR 22 MM THICK

This method is primarily used for laying large floor areas, and when there is a need to minimise the noise from walking on the floor. In this case, adhesive is applied to the entire supporting surface and the boards are then glued in place. This method counteracts to some extent the natural movement of the boards due to varying climate conditions, which makes it possible to install floors up to 12–15 metres wide without expansion joints.

Always store the boards dry and in their unopened packages for at least 48 hours in the room where they are to be installed. Then open the packages successively as the installation process progresses.

For more detailed information about floor installation, underfloor heating and stain removal, for example, read Rappgo's detailed installation instructions supplied with every delivery. You can also read this information online at www.en.rappgo.se/.

OUR NORDIC RANGE

	Oak	Ash	White Ash	Pine
Nordic	•	•	•	•
Nautic	•		•	
Fixa	•	•	•	•
SURFACE TREATMENTS				
Untreated	•	•		•
Rough untreated	•			
Varnish	•			•
Rough varnish	•			
Natural oil	•			
White oil	•		•	•
Dark oil		•		
Lye / white oil				•
White stained / varnish	•		•	•
Brown stained / varnish		•		
JOIN SYSTEM				
Glued join	•	•	•	
RappLoc	•			•
Wear layer 2,7–3,1 mm				
Thickness 13 mm	•	•	•	•
Width				
135 mm	•		•	
140 mm	•	•	•	
185 mm	•			•
Length				
2 000 mm	•			•
2 400 mm	•	•	•	
Weight/m ² 13 mm	7,5 kg	7,5 kg	7,5 kg	7,5 kg
Brinell value*, (hardness) approx.	3,7	3,6	3,6	1,9
Suitable for underfloor heating	•	•	•	•

Nordic is a narrow wood flooring with widths of 140 mm or 185 mm by 13 mm thick, and a wear layer of 2.7–3.1 mm.

Nordic Nautic, our ship deck planking, has a width of 135 mm including rubber strips.

Fixa is our seconds range and is only supplied as and when available.

* Brinell scale. Brinell hardness is measured using a hardened steel ball, diameter 10 mm that is pressed into a material sample at a given force; the area of the remaining indentation is measured and a quotient, Newtons per square millimetre, calculated.

We reserve the right to change the range without notice.

OUR MÖRKASKOG RANGE

	Oak	Ash	White Ash	Maple	Walnut	Beech	Birch	Pine	Larch	Spruce
Mörkaskog	•	•	•	•	•	•	•	•	•	•
Rough	•									
Coffee	•									
Fixa	•	•	•	•	•	•	•	•	•	•
SURFACE TREATMENTS										
Untreated	•	•	•	•	•	•	•	•	•	•
Varnish	•	•		•	•	•	•	•	•	•
Natural oil	•	•		•	•	•		•	•	
White oil	•	•	•	•				•	•	
Dark oil	•	•								
Lye								•		
Lye / grey oil	•									
Lye / white oil								•		•
White stained / varnish	•		•					•		
Brushed / natural oil	•							•	•	
Brushed / White oil	•							•	•	
Brushed / lye / white oil								•		
Brushed / varnish	•									
Brown stained / varnish		•								
Antique treated, Chateau	•									
Antique treated, Palais	•									
JOIN SYSTEM										
Glued join	•	•	•	•	•	•	•	•	•	•
RappLoc	•	•	•		•			•	•	
Wear layer 3,8–4,0 mm approx. 5 mm (width 300 mm)										
Thickness 14 mm	•	•	•	•	•	•	•	•	•	•
22 mm	•	•						•		
Width										
140 mm				•		•				
185 mm							•			
205 mm	•	•	•	•	•			•	•	•
300 mm	• ¹⁾	• ¹⁾						• ¹⁾		
Length										
2 000 mm	•	•	•		•			•	•	
2 400 mm	•	•	•	•	•	•	•	•	•	•
Weight/m ²										
14 mm	8 kg	8 kg	8 kg	8 kg	8 kg	8 kg	8 kg	8 kg	8 kg	8 kg
22 mm	14 kg	14 kg						14 kg		
Brinell value*, (hardness) approx.										
	3,7	3,6	3,6	4,8	3,4	3,4	2,5	1,9	2,2	1,2
Suitable for underfloor heating										
	•	•	•		•		•	•	•	•

¹⁾ Only in thickness 22 mm. Glued join.

All bonded joint boards, length 2,400 mm.
All RappLoc boards, length 2,000 mm.
Fixa is our seconds range and is only supplied as and when available.

We reserve the right to change the range without notice.



www.en.rappgo.se

Rappgo AB, SE-360 42 Braås, Sweden | Phone: +46 (0)474 553 00 | Fax: +46 (0)474 553 10 | info@rappgo.se